

Stalemate, Homework #4

Name: _____

Bring the completed sheet to the next chess club meeting. Use pencil. Don't use red.

A stalemate is like a tie--nobody wins. It happens when all three of the following are true for either player:

- 1) Your king is NOT in check.
- 2) Your king cannot move.
- 3) None of your other pieces can move.

Even if you are way ahead in points and position, a stalemate is only a tie. This is disappointing--**be careful!**

But if you are losing badly and can get yourself into stalemate, that's good--a tie is better than losing.

A stalemate also happens when either of these happen:

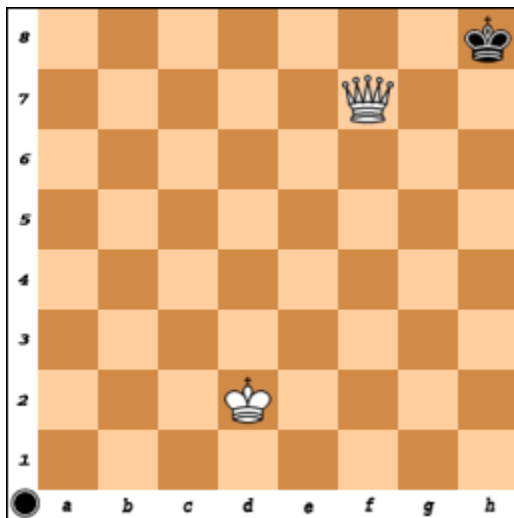
- 1) 30 moves happen with no pieces being captured.
- 2) Having the same board position 3 times in a row.

Those last two are hard, so the coach will cover them in class. For the rest of this homework, just focus on the type of stalemate where a player can't make a move.

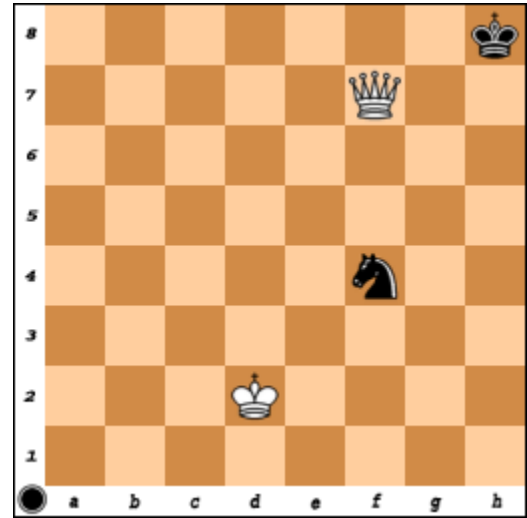
When you play:

- Don't stalemate your opponent if you're ahead.
- If you are clearly going to lose the game, try to get yourself in a stalemate so you tie instead of losing.

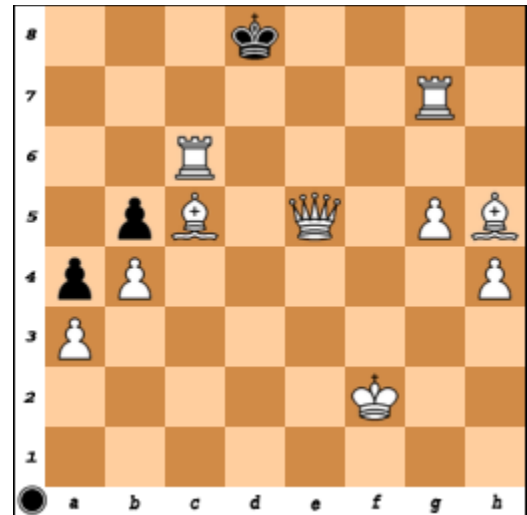
For each board, check the answer that is true for black:



- The black king is in stalemate.
- No stalemate--the black king is in checkmate.
- No stalemate--the black king can move.
- No stalemate--another black piece can move.



- The black king is in stalemate.
- No stalemate--the black king is in checkmate.
- No stalemate--the black king can move.
- No stalemate--another black piece can move.



- The black king is in stalemate.
- No stalemate--the black king is in checkmate.
- No stalemate--the black king can move.
- No stalemate--another black piece can move.

In the last board above, white has **much** more power on the board. Does this matter?

- Yes
- No